



Haverstock Hill NW3

Parkheath
Sold on Service





Haverstock Hill, NW3

£1,100,000

Share of Freehold

- An extremely spacious ground floor apartment
- Set in attractive well maintained purpose built block
- Secure underground parking space
- Private decked terrace leading onto communal patio and gardens
- 1325 sq ft approx of flexible accommodation in need of modernisation
- 24ft reception with doors opening to garden area
- 2 double bedrooms and 2 bathrooms plus 3rd bedroom/dining area
- Share of freehold
- Close to all Belsize Park amenities and Hampstead Heath and Primrose Hill
- Moments to Englands Lane's cafes and boutiques

Belsize Park/Hampstead
208 Haverstock Hill
NW3 2AG
Sales 020 7431 1234
Lettings 020 7431 3104
nw3@parkheath.com

South/West Hampstead
192 West End Lane
NW6 1SG
Sales & Lettings
Tel 020 7794 7111
192@parkheath.com

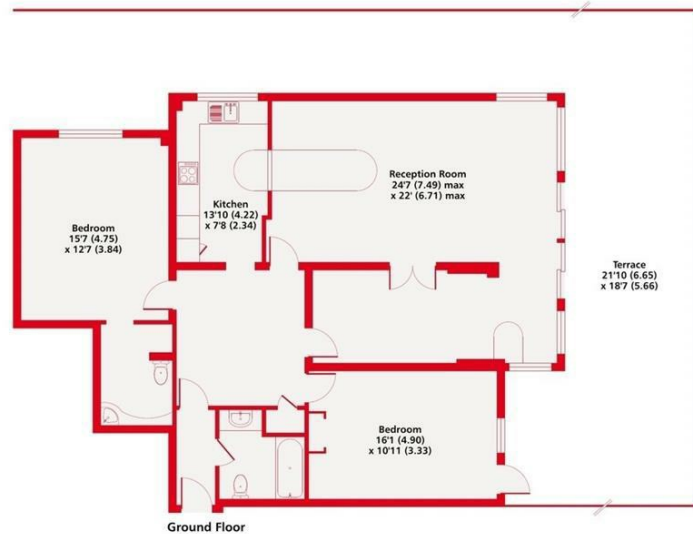
Kensal Rise
54-56 Chamberlayne Rd
NW10 3JH
Tel 020 8960 4845
kensal@parkheath.com

Property Management
192 West End Lane
NW6 1SG
020 7433 6174
pm@parkheath.com

www.parkheath.com

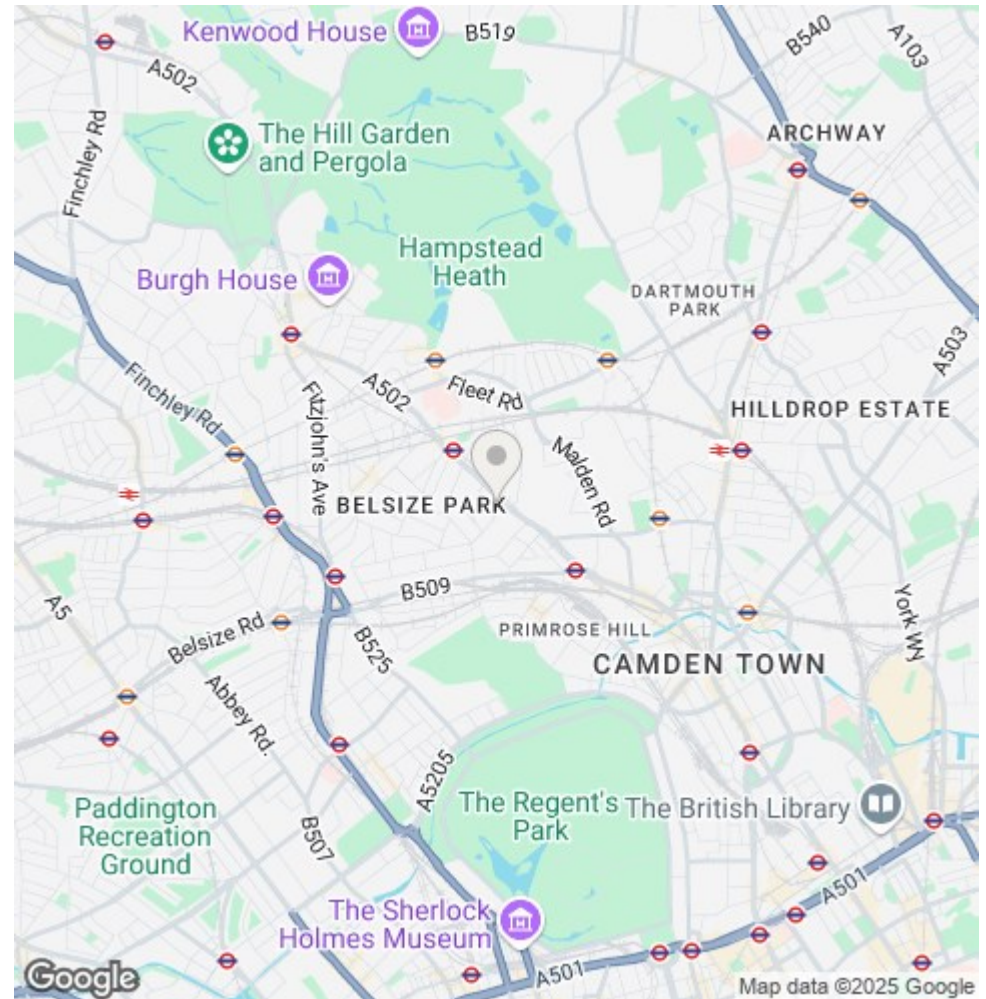
Parkheath
Sold on Service

Camden Tax band G



Haverstock Hill, NW3
Approximate Area = 1325 sq ft / 123 sq m
For identification only - Not to scale

Floor plan produced in accordance with RICS Property Measurement 2nd Edition,
Incorporating International Property Measurement Standards (IPMS2 Residential). © nrichecom 2024.
Produced for Kinleigh Folkard & Hayward. REF: 1220877



The particulars do not constitute part of an offer or contract. The particulars, including text, photographs and plans, are for the guidance only of prospective purchasers/tenants and must not be relied upon as statements of fact. The descriptions provided therein represent the opinion of the author and whilst given in good faith should not be construed as statements of fact. Nothing in these particulars shall be deemed a statement that the property is in good condition or otherwise or that any services or facilities are in good working order. All measurements are approximate